



SEWICONZ USER MANUAL

V1.9.2



JULY 21, 2023
S & S COMPUTING
Oak Ridge, TN 37830

Table of Contents

1. Introduction	3
1.1 Getting Started	3
1.2 FAQ (Frequently Asked Questions)	7
1.3 Contacting Us	8
1.4 Purchase Sewlconz	8
2. Control Buttons	9
2.1 Adjust Thumbnail Size (XP)	9
2.2 Always Show Icons (VISTA and W7-W8)	9
2.3 Clear All Selections	10
2.4 Clear Icon Cache	10
2.5 Color Order	10
2.6 Disable Sewlconz	10
2.7 Display File Icon Overlay	11
2.8 Fabric Color	11
2.9 File Association	11
2.10 Open Preview Pane	12
2.11 Select All	15
2.12 Select Units	15
2.13 Show Icons in Zip Files	15
2.14 Show Texture in Preview Pane	15
2.15 Update Sewlconz	16

1. Introduction

1.1 Getting Started

Sewlconz© is Windows software that displays icons (pictures) for various embroidery, quilt and graphics files when those files are viewed using MS Windows Explorer®. For embroidery and quilt files, those icons depict the pattern of the stitches encoded in those files. Thus, users can scroll through Windows folders (and zipped folders, too) and actually see the contents of embroidery files, without having to open the files.

Figure 1a shows a folder containing embroidery files when viewed in Windows Explorer. Only a default "blank sheet" icon is displayed for all the files, and the Preview Pane (on the right) is empty (*No preview available*). Figure 1b shows the same folder when **Sewlconz** has been installed and activated (see activation details below). Now the *contents* of each embroidery file are displayed as a *thumbnail image*, depicting how the patterns look if they were sewn out. Also, the file "Dino2.pes" in the upper right has been clicked to display the magnified textured image in the preview pane.

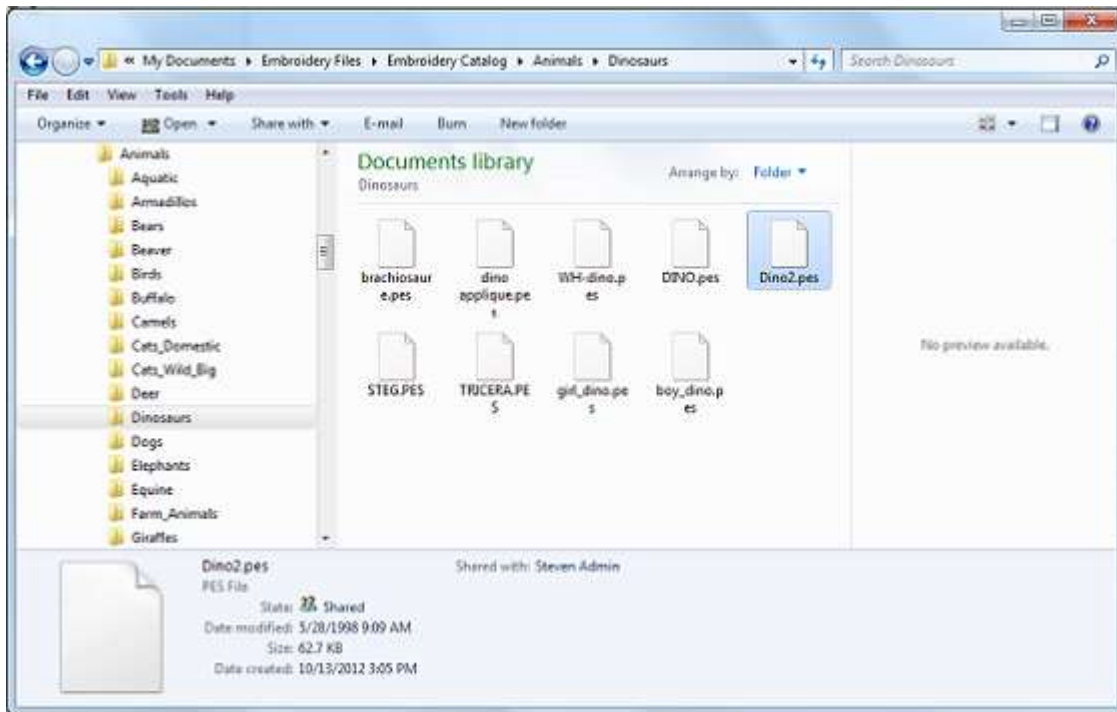


Figure 1a Windows Explorer showing blank icons for embroidery files, when **Sewlconz** is not activated.

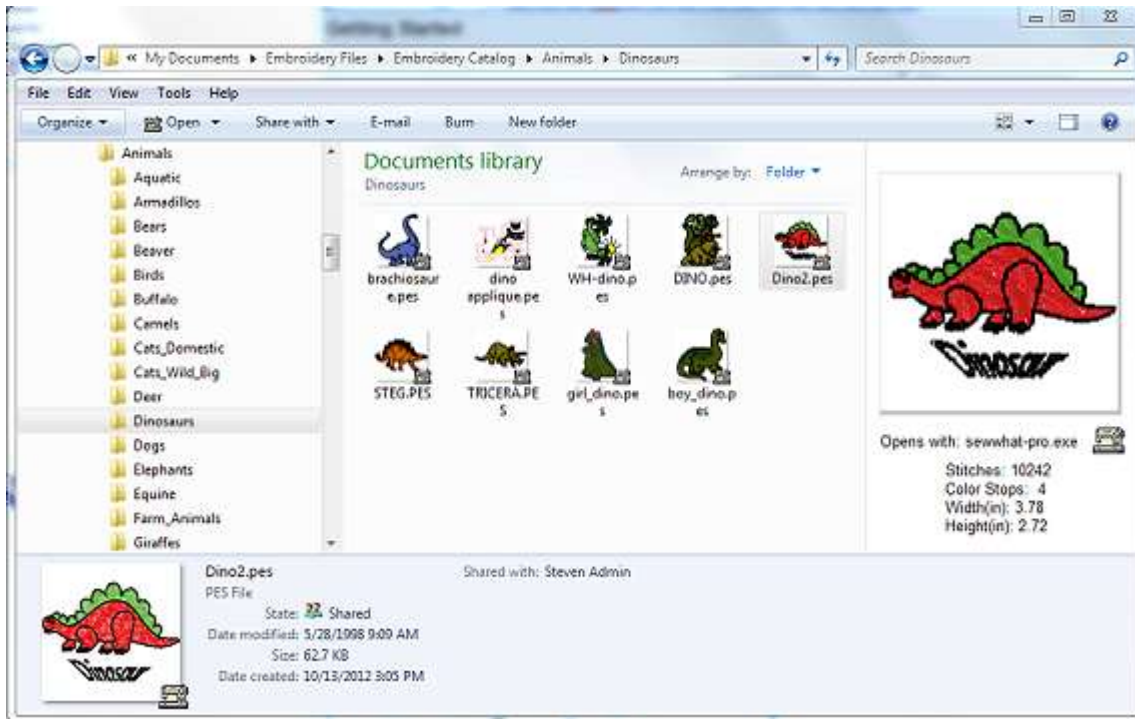


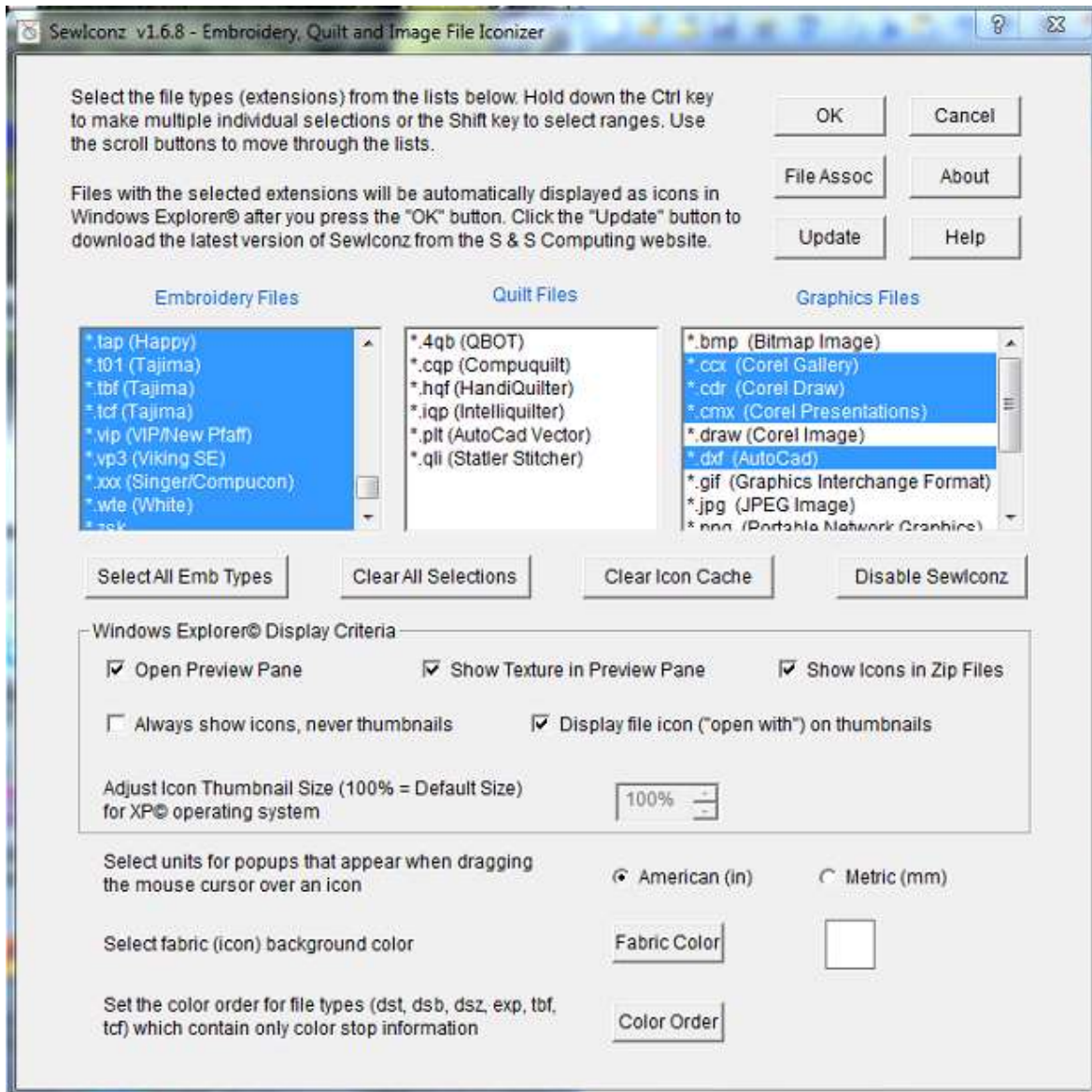
Figure 1b Same Explorer window, with **Sewlconz** activated.

Activating Sewlconz

After installing **Sewlconz** on your computer, there will be an icon on your desktop which looks like this (for 64-bit **Sewlconz**, the label will be Sewlconz64):



Double-click this icon to open the **Sewlconz** settings dialog shown below in Fig. 2. This dialog allows you to select the embroidery file types to show as icons in Windows Explorer. Various display criteria can also be set from there. Note in the top right corner next to the "Close" (X) button is a "?" button. You can click on that at any time to convert your cursor to a floating "?". Move your cursor over any of the buttons or lists and left-click to pop-up help about that item.

Figure 2. The **SewIconz** settings dialog

A brief outline of the steps needed to activate and customize SewIconz for your computer is given below:

Select File Types To Display as Icons

- Select - by left-clicking - file types (extensions) in any of the three lists (embroidery, quilting, graphics) shown in Fig. 1. Selected items will appear in blue and will be displayed in Explorer as

icons. All the embroidery types can be selected (or deselected) at once by pressing the ["Select All Emb Types"](#) (or ["Clear All Selections"](#)) button.

Set Explorer Display Criteria

- If you want to display icons for files stored inside zipped files, check the ["Show Icons in Zip Files"](#) box. (This will only work if you have a license issued after Jan 1, 2010.)
- For XP, the only option available (undimmed) is to select the [Icon Thumbnail Size](#).
- For VISTA/W7/W8, several display options are available:
 1. Open [Preview Pane](#)
 2. Show [Texture](#) (in Preview Pane only)
 3. [Always show icons](#), never thumbnails
 4. Display an icon [overlay](#) on thumbnails

Set File Association

- Click the "File Assoc" button to set the [file associations](#) for the selected embroidery file types.

Miscellaneous (Optional) Settings

- Select [units](#) for popup information. You may choose either American or metric units of measurement
- Select the [fabric color](#) (default is white) which allows you to pick a background color for the icons and thumbnails.
- Select the [color order](#) for file types (like exp or dst) which do not include an internal palette

Accept Settings

After choosing the file types to iconize, and selecting the various display settings, click the "OK" button to accept these settings (or if you don't want to accept them, click "Cancel" and make your settings choices at a later time).

At any time after your initial use of the settings dialog, you may change your settings by double-clicking the Sewlconz desktop icon and repeating the steps outlined above.

1.2 FAQ (Frequently Asked Questions)

Q Does **Sewlconz** work with all versions of Windows?

A **Sewlconz** works on computers running Windows XP, VISTA and later versions of the Windows Operating System. The combined installer package downloaded from the S & S website will automatically install the correct bit version of the software for your computer. If you have legacy 32-bit embroidery programs installed on a 64-bit computer, then you should also install the 32-bit version of Sewlconz *in addition to* the 64-bit version. This will allow you to see icons in the File/Open dialogs of the legacy 32-bit applications.

Q After installing **Sewlconz** and selecting the file types to iconize (by double-clicking the **Sewlconz** desktop icon), only the icons for small views display properly. The medium and large (Tiles, thumbnails) views show up as black boxes or with "weird" icons in them. What is wrong?

A This occurs because there are several settings in Windows that may block the display of large icons (thumbnails). To fix this, open the **Sewlconz** desktop application. Make sure the item "[Always show icons, never thumbnails](#)" is **unchecked**. Click the "Clear Icon Cache" button. Now see if your large icons display correctly. (You should close and then reopen Windows Explorer.)

If icons are still not appearing, then one more setting has to be adjusted. Go to Start->Control Panel->System & Maintenance->System->Performance Information & Tools. (This assumes you are using Control Panel Home View. In Classic View, click Performance Information.) Now click the "Adjust Visual Effects" link. On the "Visual Effects" tab, make sure the check box "Show thumbnails instead of icons" is checked. One of the two option "Let Windows Choose What's Best for my Computer", or "Custom", needs to be selected to be able to make this change.

Q After setting a file association ("Open With" in Explorer) for an embroidery file type, the icons no longer display for that file type and only the application icon overlays show. How do I recover the **Sewlconz** (pattern) icons?

A Follow the steps below:

1. Double-click the **Sewlconz** desktop icon and press the "File Assoc" button.
2. Follow the instructions to set the [file association](#).
3. Click the "OK" button.

The **Sewlconz** (pattern) icons should display correctly now, and your file associations will work, too.

Q Will **Sewlconz** display icons in the VISTA/WIN7 **Details and/or Preview Panes**?

A Yes. You can show/hide the Explorer Preview Pane by checking the ["Open Preview Pane"](#) button on the **Sewlconz** dialog. The Preview Pane is now fully supported by Sewlconz for both regular and zipped files. It is recommended to use this pane, rather than the Details Pane, for viewing enhanced (textured) thumbnails of individual files.

To open the Details Pane, click (in Windows Explorer) Organize->Layout->Details Pane.

Q When do I need to activate (double-click) the **Sewlconz** desktop icon?

A You only need to do that whenever you wish to initially select (after installing Sewlconz) or change the choice of file types that should appear as icons, or if you want to change the units displayed for the pattern properties (which display when you hover your cursor over the pattern file icon). Otherwise, the desktop icon for Sewlconz can be ignored and just serves as a reminder that Sewlconz is on your computer and handling the display of embroidery (quilting and some other image) icons and thumbnails.

Q How do I purchase **Sewlconz**?

A Purchase and upgrade information is available [here](#).

1.3 Contacting Us

support@sandscomputing.com

1.4 Purchase Sewlconz

You may purchase **Sewlconz** from the Shop-Online webpage of the S & S website:

<http://sandscomputing.com>

There is a 7 day DEMO period during which you may run the software (with no restrictions). After that, you can either uninstall the software or purchase from the "Add-to-Cart" button to the left of the download links. After you purchase the license, the registration information will be emailed to you and you can register the DEMO to make it a licensed copy. Note: you DO NOT have to uninstall the DEMO if you want to keep the software, but only register it after purchasing the license.

If you purchased **Sewlconz** prior to Jan 1, 2010, then your license can be upgraded (for \$10) to enable the [Zip-viewer](#) feature.

2. Control Buttons

2.1 Adjust Thumbnail Size (XP)

Thumbnail sizes are continuously variable in VISTA and W7 and may be adjusted from the View menu in Windows Explorer.

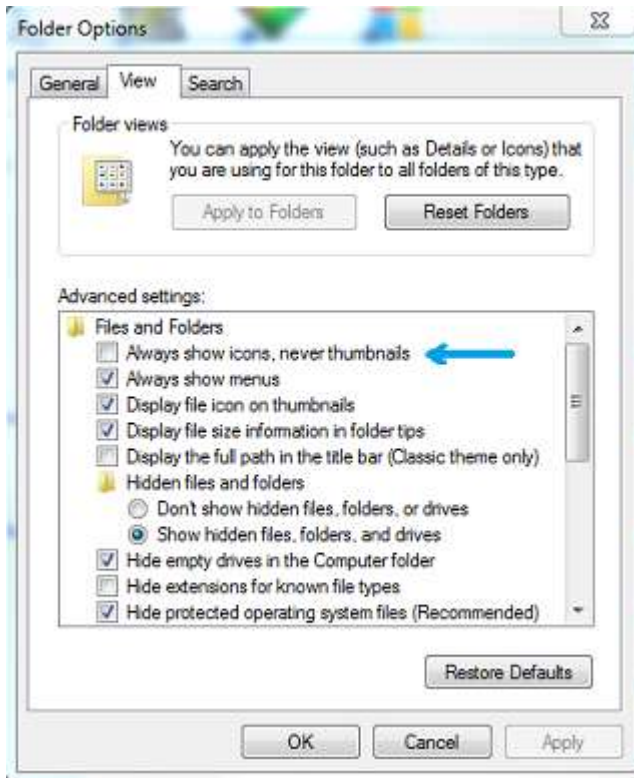
In XP, use this control to select the thumbnail size relative to the default value (100%).

2.2 Always Show Icons (VISTA and W7-W8)

Check this box if you want to show icons for all image sizes, rather than thumbnails for the larger (medium and above) sizes and icons for the smaller sizes.

The main difference is that thumbnails display with a decorative border and can show an [icon overlay](#) indicating the application that is currently selected to open the file when it is double-clicked in Windows Explorer.

It is recommended to leave this item *unchecked*. To force this option (either on or off) without having to reboot, it is advisable to go to Start->Control Panel->(Appearance and Personalization)->Folder Options and click the "View" tab there. Under "Advanced Settings", uncheck (or check) the box "Always show icons, never thumbnails". See the figure below where the item is marked with the blue arrow.



2.3 Clear All Selections

Press this button to clear all the selected files in the embroidery, quilt and graphics files lists.

2.4 Clear Icon Cache

Press this button to clear the icon and thumbnail caches. This may be necessary if the Windows caching system has corrupted any icons. Another situation where clearing the cache is essential is when you change the ["Always show icons"](#) display setting.

On VISTA and W7, sometimes the thumbnail cache can not be immediately cleared (a message will inform you of this). In that case, you should try again to clear the cache *after* doing a system reboot.

2.5 Color Order

This advanced option allows you to set the color order for various embroidery files - like Tajima .dst or Melco .exp - which do not contain an internal color palette. By default, the colors are ordered consecutively according to the Brother (PES) palette.

2.6 Disable SewIconz

Press this button to disable **SewIconz** without actually uninstalling it. If you want to completely uninstall SewIconz from your system, then right-click the **SewIconz** desktop icon, click on "Delete", and follow the link to the control panel uninstall list and remove **SewIconz** from that list.

2.7 Display File Icon Overlay

Check this option if you want to display the file "open with" icon as an overlay in the lower right corner of the Explorer pane where icons are shown. This overlay only appears for thumbnails (medium size and above), so you must leave the ["Always show icons, never thumbnails"](#) option **unchecked**.

2.8 Fabric Color

Click on this option to set a background (simulated fabric) color on which to draw the embroidery patterns. This is useful, for example, for white lace patterns which need a different background color from the default (white) to be visible.

2.9 File Association

Once you have selected the file types you want to associate with a particular embroidery (or quilt or graphics) editor, the File Association "Set" and "Clear" buttons on the **SewIconz** dialog will become enabled.

Clear

Click the "Clear" button to clear any file associations that were previously set using Windows ("Open With") that may interfere with the display of icons provided by **SewIconz**. For example, if the wrong icons or no icons are shown for your selected file types, clearing the file associations may fix that problem.

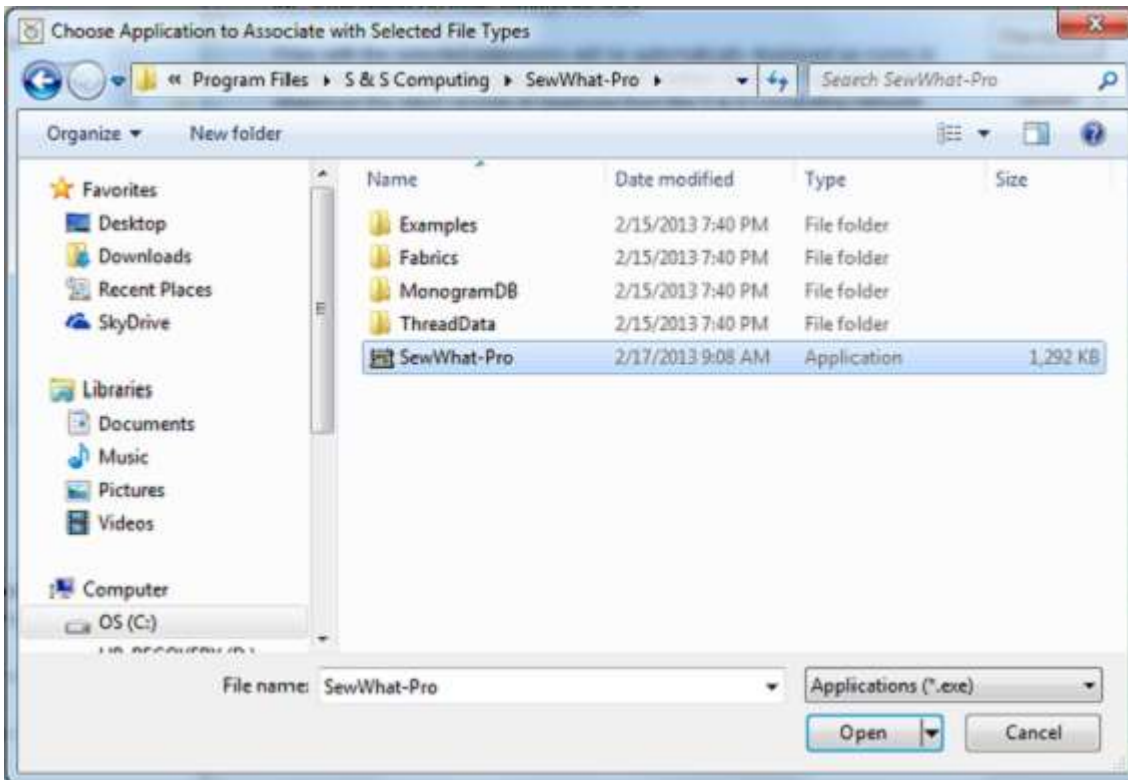
Set

Click the "Set" button to pop-up the Explorer pane shown below. It will automatically open to the "Program Files" directory where most application files are stored. Navigate to the appropriate folder to find the embroidery editor executable file for opening (by double-clicking them) the selected embroidery file types.

In the example shown here, the **SewWhat-Pro** executable file (with extension "exe") has been selected to be the editor associated with the selected embroidery file types. Click on the "Open" button to apply the association. This will return control to the main **SewIconz** dialog.

You may now select *different* file types to associate with a *different* editor by repeating this process as often as required.

NOTE: If your computer OS is 64-bit, you may have to navigate to the "Program Files(x86)" folder to find a legacy 32-bit editor.



The "Program Files" folder for setting file associations in Sewlconz.

2.10 Open Preview Pane

Check this option to open the Windows Explorer Preview Pane. **Sewlconz** automatically enables the "show preview handlers in preview panes" option in Windows so that previews will display if appropriate software (like **Sewlconz**) is installed. (If this option is *not* enabled from the Tools->Folder Options->View Advanced Settings list, then no previews will be displayed.)

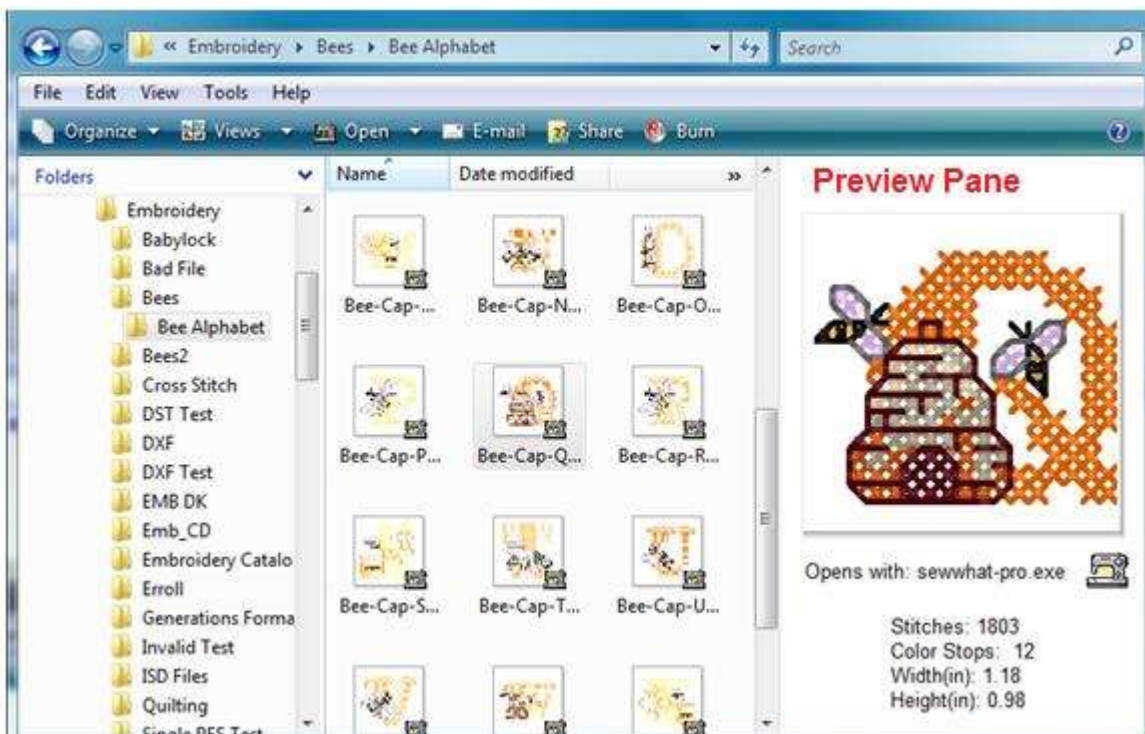
The Preview pane allows you to see an enlarged preview of the selected (highlighted) embroidery, image, or document file in the middle Windows Explorer window, without having to actually open it. It can be resized by dragging the separator bar between the middle and preview pane. Useful statistics about the pattern (size, thread count, etc) will also appear. Previewing also works for files in zipped archives - even for files in zipped folders! If the ["Show Texture"](#) option is also checked, then a textured (3D) view of the embroidery file will appear in the preview pane. (NOTE: texturing will only be applied to embroidery files with readable stitch data. Some embroidery files - like *.gen - are proprietary formats and only provide a bitmap which cannot be textured.)

Note: VISTA does not have the same ease of use as W7. You can use the instructions below to *manually* toggle the Preview Pane. In VISTA, **Sewlconz** only enables/disables preview panes for Documents and Zip Folder types (in W7, ALL folder types are enabled). If other folder types - such as Picture folders, Video folders - require a visible preview pane, then follow the instructions below to enable it for those special folder types.

How to Turn the Preview Pane On or Off for Specific Folder Types in VISTA

Note: these instructions will also work for Windows 7 although in most cases that will not be necessary.

EXAMPLE: Windows Explorer Preview Pane

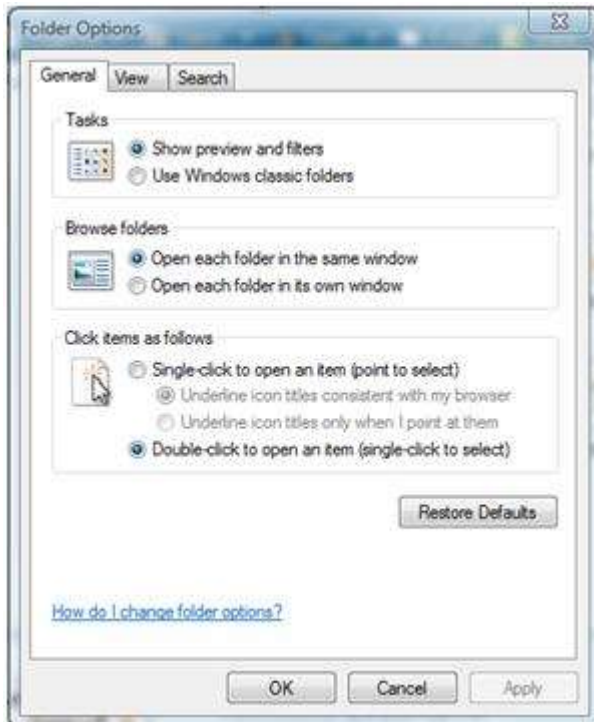


STEP ONE: Set Folder Options

1. Open Tools->Folder Options in the Windows Explorer menu.
 2. Click on the **General** tab. (See screenshot below)
- Make sure **Show preview and filters** is selected (dotted)

NOTE: Having *Use Windows classic folders* selected instead will remove the preview pane in the Windows Explorer window regardless of what you have set in **Step Two** below.

Tools->Folder Option->General Tab



STEP 2: Toggling the Preview Pane from Windows Explorer

1. Open a Windows Explorer window. (A short-cut for this is to press the Windows key + "E" keyboard combination.)
2. Click on **Organize**, then click **Layout**. (See screenshot below)
3. To **Turn On** the Preview Pane -
Click on **Preview Pane** to highlight the icon.
4. To **Turn Off** the Preview Pane -

Click on **Preview Pane** to unhighlight the icon.

Organize->Layout/Preview Pane option

2.11 Select All

Press this button to select all the files in the embroidery files list at once.

2.12 Select Units

Click this to use either American units of measurement (inches) or metric units (mm). These units are displayed in the Preview Pane and in the Info-tip that pops-up when the mouse cursor hovers over an embroidery file.

NOTE: the info-tip pop-up is disabled for files inside zip files.

2.13 Show Icons in Zip Files

Check this option to allow icons to be displayed for embroidery files that are at the top level of the zip archive (NOT inside folders).

This option is only available to owners of a recent (after 01/01/10) Sewlconz license. If you want to use this option and do not own the upgraded license, you can [purchase](#) an upgrade for \$10.

Note that there is a free third-party product called jZip which allows you to view compressed archives in many formats other than **zip** (such as **rar**).

IMPORTANT NOTE FOR 64-bit USERS

Currently, jZip is only available in 32-bit format. You can still install and use it on a 64-bit computer, but you must install both the 32-bit and the 64-bit versions of Sewlconz to view embroidery files inside compressed archives.

2.14 Show Texture in Preview Pane

Check this option to display thumbnails in the [Preview Pane](#) that are textured (3D).

2.15 Update Sewlconz

Click the “Update” button to search the S & S Computing website for recent versions of **Sewlconz**. If an update is available, you will have the opportunity to download and install it.