

## SEWICONZ® USER'S GUIDE

SewIconz (SI) is a stand-alone program, meaning it does not need any additional program to operate (other than system files that are part of the Windows operating system). It will iconize (create icons, which are small pictures) of embroidery designs and some image files when viewing them in Windows Explorer.

Installing SewIconz - If you are installing the 'retail' version of the product, you will need the registration email that is sent from S & S Computing after your payment has been verified. Download the SI installation file, called "SewIconz.msi", to any folder on your computer. Be sure to note the folder name so you can find the file. Suggestion: Avoid putting the file on your desktop, unless you create a special folder on the desktop for the file (see the hint below on creating a folder on your desktop). My Documents is a good (recommended) place to put it.

Prior to starting the install, users should ALWAYS right-click the .msi file and scan it to be sure no virus has inadvertently crept into the software along the download route. THEN and ONLY THEN, should the anti-virus software be disabled and it should immediately be re-enabled after the install is over.

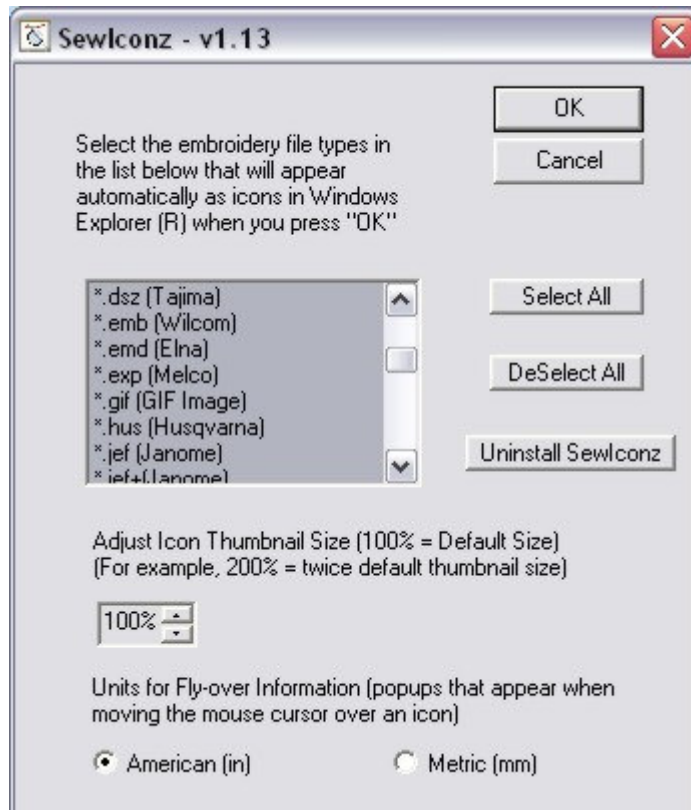
Note: In some cases, users are getting a 1904 error. To avoid this, it is highly recommended that you disable your anti-virus software. Make certain when you are finished installing SewIconz, that you enable the anti-virus software again.

Double-click on the SewIconz.msi installation file and follow the prompts. If this is an upgrade, you do not need to enter registration information. Once the install process is complete, there will be a SewIconz icon on your desktop.

Configuring SewIconz - In order for SI to work, you MUST run the program to select the formats you would like to view as icons (pictures). Double-click the SI desktop icon and select the file types from the list. This can be done in two ways:

1. Clicking the 'select all' button which will select every format in the list.
2. By holding the CTRL key and left mouse button you can randomly select the formats you would like to view. Note: make sure you continue to hold the CTRL key during the selection.

Note: If you are installing the Retail version for the first time, after having previously run the DEMO version, you **must** reselect the files from the list and press the "OK" button, in order for the retail icon handler to be properly installed. This same rule applies if you are upgrading.

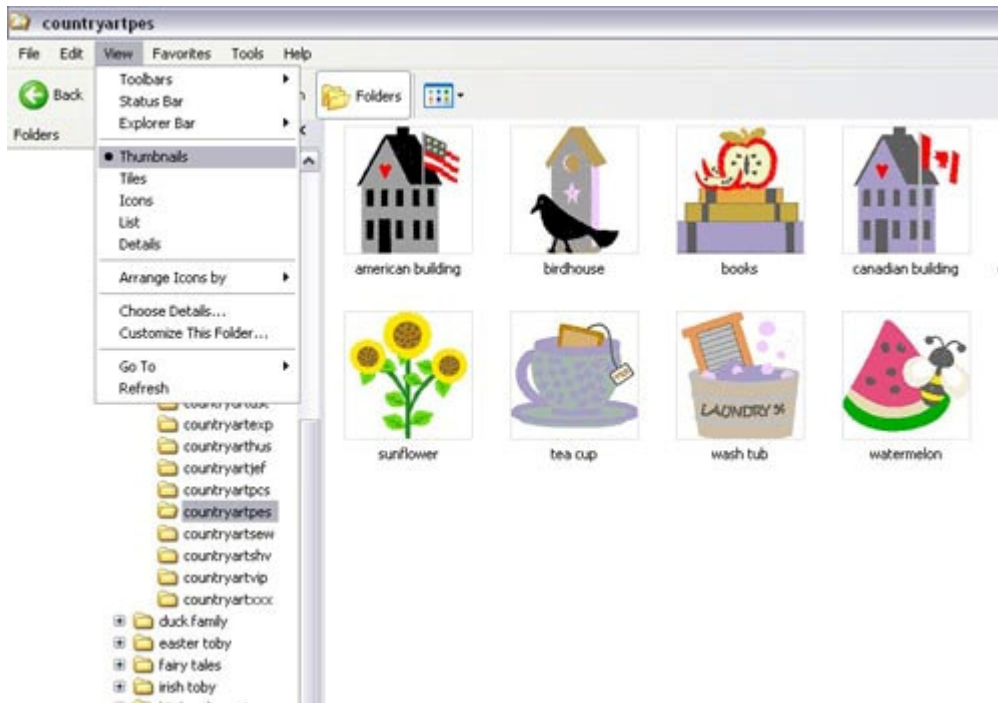


The size of the thumbnail that Windows Explorer will display (in Thumbnail view) can be increased or decreased by changing the percentage in the size adjustment edit box. The default is 100%. Note: This adjustment only works with the Thumbnail view in Windows Explorer. The fly-over (box that appears with design information when you drag your mouse cursor over a file) can be displayed in inches or metric.

Once these settings have been made, click OK. There may be a few seconds delay and a message will appear indicating that SewIconz was successfully installed. You will now be able to view the selected formats in Windows Explorer.

Selecting Various Views in Windows Explorer - There are several views in Windows Explorer that you can choose from. To select the one most suitable for you, follow the steps below. Note: you might want to navigate to your designs so you can see what they will look like when displayed in a particular type of view.

1. Open Windows Explorer
2. Click on 'View' and you will see a screen similar to the following one:



Thumbnails

Tiles

Icons

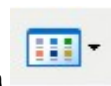
List

Details

Note: Thumbnails will provide the largest icon and the size can be adjusted as explained in the 'Configuring SewIconz' section.

Select the view you prefer. This view can also be applied to all of the folders in Windows Explorer by clicking on 'Tools'/'Folder Options'/'View Tab' and click the button 'Apply to all Folders'.

3. Click OK



This process can also be done by clicking on this button next to the folders button in Windows Explorer.

HINTS/SUGGESTIONS - (these are general hints)

Creating a shortcut (icon) on your desktop for Windows Explorer

You can create a shortcut (icon) on your desktop for Windows Explorer by following the steps below.

Note: these instructions are based on an XP Operating System.

1. Click on the 'Start' button in the lower left corner
2. Click on 'Programs'
3. Open the 'Programs' list and click on 'Accessories'
4. Find 'Windows Explorer' and 'right click'
5. Select "create shortcut"

6. A Windows Explorer will appear at the end of the list with a (2)
7. Right click and select 'send to' and then 'desktop'

You will now have a Windows Explorer shortcut on your desktop that you can double-click and access your design files.

#### Creating a Folder on Your Desktop

1. Go to an empty space on your desktop and right single click
2. When screen opens, scroll down to 'new' and then 'folder'
3. This will create a folder on your desktop called 'new folder'
4. Click on the name and rename it to something meaningful, i.e. Downloads

We hope this short guide has helped you to feel more comfortable with the installation and use of SewIconz. Please feel free to contact S & S Computing if you should need additional help. You are also welcome to join the SewWhat! Embroidery Software Yahoo Group where you can ask any questions you might have.

[SewWhatEmbroiderySoftware-subscribe@yahogroups.com](mailto:SewWhatEmbroiderySoftware-subscribe@yahogroups.com)

Judy Faulkner, SewWhat! Yahoo Group owner  
Gwen Menezes, Stitches In Motion  
Revised June 24, 2007

SewIconz is a product of S & S Computing, Inc. – <http://www.sandscomputing.com>.