



---

# SEWCLEAN USER MANUAL

---

V1.2.4



FEBRUARY 14, 2013

S & S Computing  
Oak Ridge, TN 37830

## Table of Contents

Introduction .....	1
Getting Started .....	1
Menus .....	7
File Menu .....	7
Options menu .....	7
Help menu .....	7
File Commands.....	8
Find Duplicates.....	8
Delete Duplicates .....	8
Options Commands .....	9
Deletion Criteria.....	9
Duplicate Folders .....	9
Language Support.....	11
Help Commands .....	12
Help Topics .....	12
Auto-Update .....	12
Update Now.....	12
Change (History) Log .....	12
Toolbars.....	13
Main Toolbar .....	13



## Introduction

### Getting Started

Welcome to **SewClean** - the embroidery file duplicate cleaner. You may use **SewClean** to find and select duplicate embroidery files on your hard drive (or removable, writeable media) and to safely remove them. Duplicates may be deleted to the Recycle Bin (where they may be recovered if desired) or moved to a user-defined folder for future deletion.

The **SewClean** workspace is divided into two panes. The left pane contains the folder "tree" showing all the folders on your computer, including any attached removable media drives and networked drives. The tree can be expanded or collapsed by clicking on the "+" marks beside the adjacent drive name. The right pane is a work pane which displays different aspects of the search, as will be described below.

The following discussion mirrors the various steps that appear as reminders at the bottom of the various panes:

#### STEP 1:

To begin using **SewClean**, expand the folder tree in the left pane which displays the top-level folders on your computer (including connected external drives and networked drives). Click on the "+" sign to open subdirectories. This is similar to folder navigation in Windows Explorer®, except that only folders (and no files) are displayed. In this way, you can navigate to a folder - or group of folders - containing the embroidery files that you want to check for duplicates. In Fig. 1, the *Documents* folder has been expanded to reveal several sub-folders which are known to contain embroidery files.

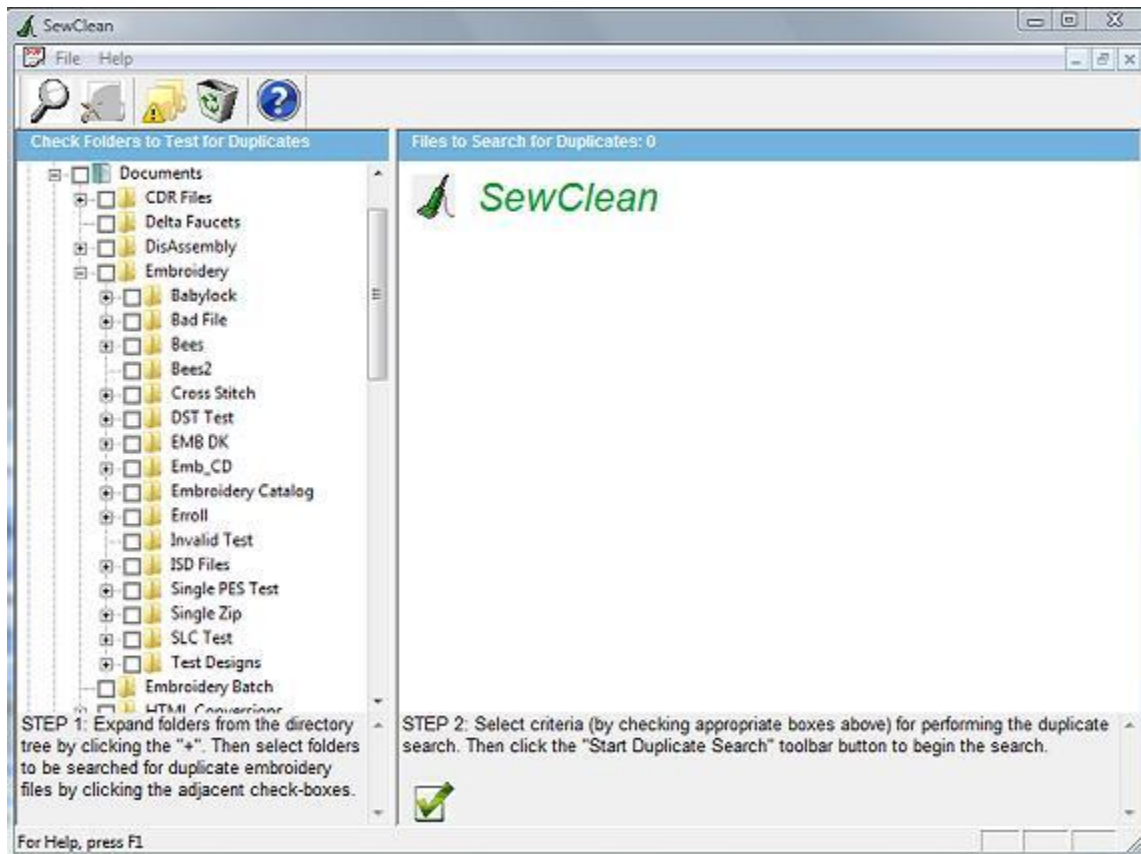


Figure 1

Once the folders have been expanded, you can click (with your left mouse button) the adjacent check-box(es) to begin searching them for embroidery files. Generally, the higher up (closer to the "root" folder) in the tree hierarchy that you click a check-box, the more subfolders will be searched for duplicates, and therefore the longer it will take to perform the search. Therefore, to speed up the search process, you can restrict the search to a smaller subset of all folders on your system.

#### STEP 2:

Once you have chosen the subset of folders to be scanned (by clicking the appropriate checkboxes), the empty screen on the right of the **SewClean** workspace will populate with check boxes that allow you to select options for controlling how the duplicate search will be performed. (See Fig. 2 where the folder *Emb\_CD* has been checked.)

Note that the title bar of the right pane indicates the number of files found in the checked folder(s). In this case, there are 782 files in the folder and its subfolders that will be checked for duplicates when **SewClean** executes.

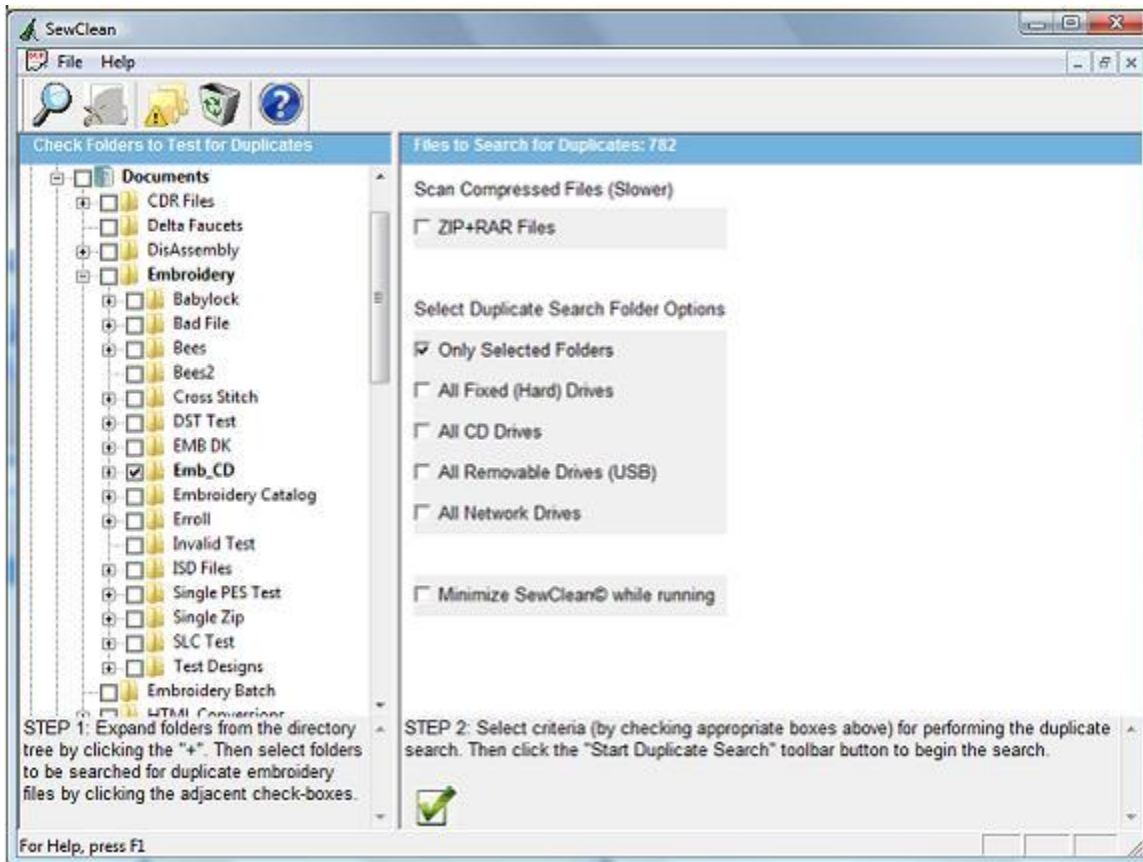


Figure 2

Next, there are various options which can be chosen that effect the way duplicates are found:

- **ZIP + RAR Files.** If this item is checked, then when **SewClean** scans the various computer folders for duplicates, it will look inside all compressed archive files too. This can significantly slow down the duplicate search process. If you use compressed files only for backing-up your embroidery files, it is recommended NOT to check this option. Note that any Zip or Rar files in the *selected* folders will be scanned for duplicates, even when this option is unchecked.
- **Only Selected Folders.** Check this option to restrict the duplicate search to the folders you selected (checked) in the left pane. Otherwise, *all* folders on your computer will be searched (subject to restrictions set by the following items).
- **All Fixed (Hard) Drives.** Check this option to scan all the fixed drives in your system. This excludes external or network drives.
- **All Removable Drives.** Check this option to scan removable drives (USB) that are currently attached to your computer.
- **All Network Drives.** Check this option to scan all network drives.

There is a button at the bottom of the right pane that can be checked to "minimize" **SewClean** while it searches for duplicates on your system. (**SewClean** will minimize when the duplicate search button is clicked.) This is a useful option if your search path contains a lot of folders and

files. Since the search may take several minutes, while **SewClean** is performing the duplicate search, you can run other applications. When **SewClean** is finished, it will automatically maximize itself.

STEP 3:

Begin STEP 3 by clicking the "[Start Duplicate Search](#)" ("spyglass" button )

While **SewClean** is searching for duplicates a status report will be printed out in the right pane (see Fig. 3). This indicates what activities are currently being performed. Depending on how many folders are being scanned, this step may take anywhere from several seconds to minutes or hours. The elapsed time for the search appears in the upper right corner of the pane title bar, and the number of files remaining to be read is indicated in the workspace.

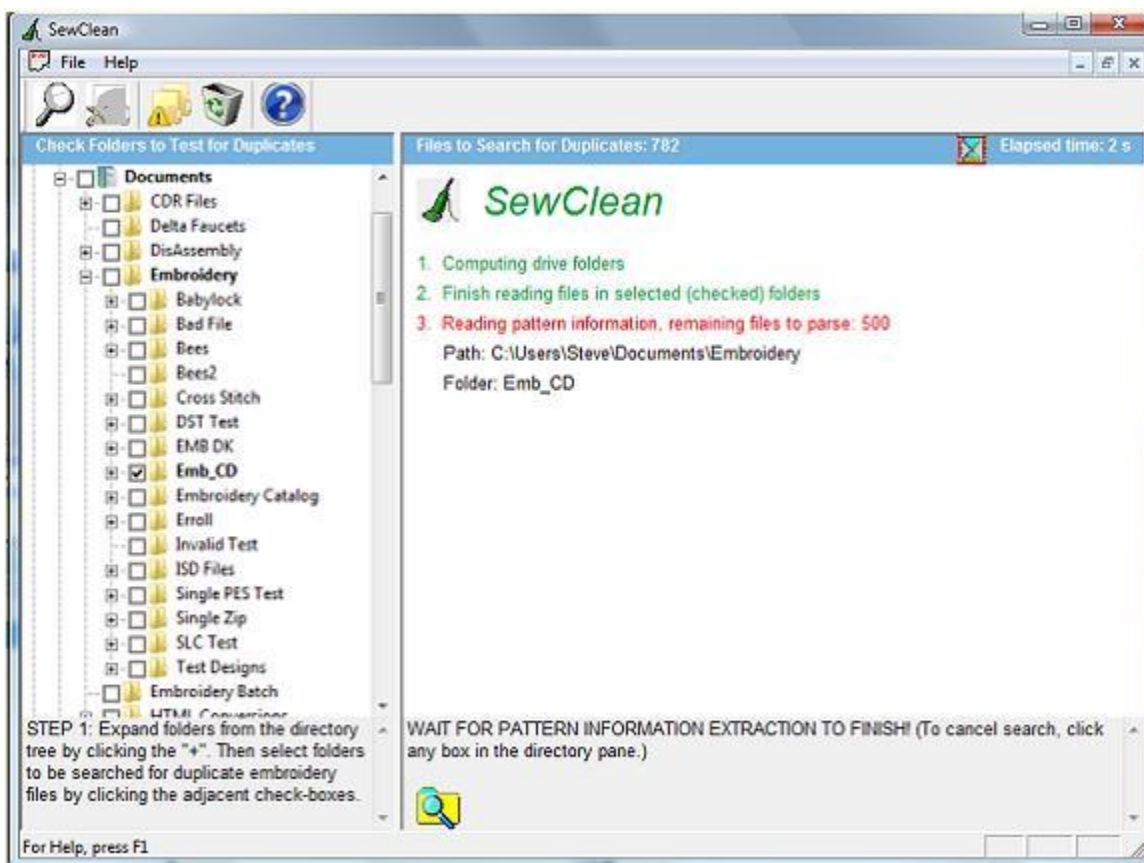


Figure 3

When the scan is completed, the files with duplicates are displayed in the right pane. (See Fig. 4.) The file path information (where the duplicates are located on your system) is indicated, along with icons showing the embroidery pattern contained in the files. The "primary" file is shown left-justified in the pane, with the proposed duplicates indented beneath it. Duplicates in the same folder display no additional folder information, whereas files in folders that are "children" of the primary folder have their path indicated *relative* to the primary folder. Duplicates that are neither in the same or child folders have their *full* paths displayed.

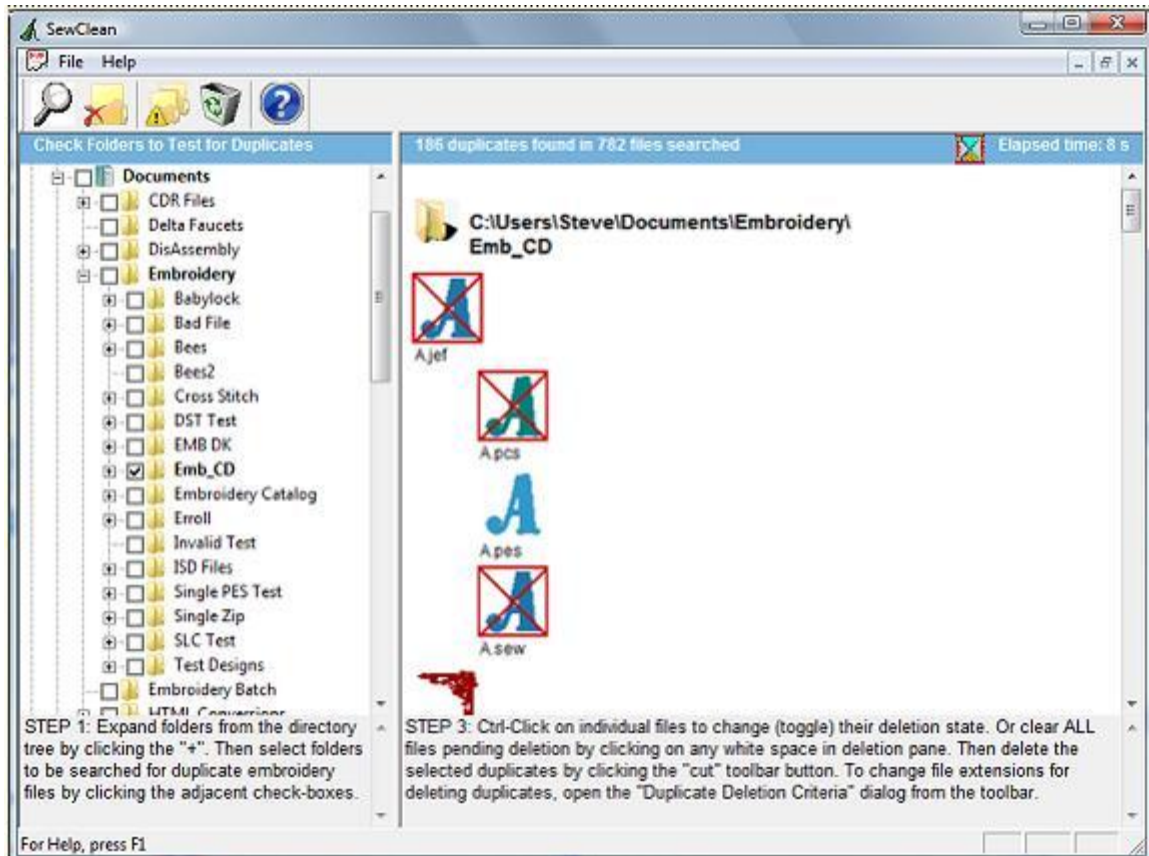





Figure 4

Depending on how the [Deletion Criterion](#) were selected (you can change them by clicking the

toolbar button ) , certain duplicates will appear with a red "X" through them to indicate they are ready to be deleted. At this point, you should review the duplicates that were selected by **SewClean**, based on your deletion criteria and determine if any are incorrect ("false" duplicates). This can occur in "rare" cases when the stitch count, color count and pattern size criterion used for matching are met for two files, but the pattern is still different. In such case, visual inspection of the duplicate icons chosen for deletion is the only way to remove such files from the deletion list. This can be done by holding down the **Ctrl** key and clicking on the icon of the "false" duplicate(s).

Performing this action will remove the red "X" from the file you click and remove it from the deletion list. If a particular icon is *not* "X"-ed out, and you want to add it to the deletion list, just **Ctrl** click on the file icon. Finally, you can clear *all* the selected files at once by clicking on a blank part of the right pane.

Complete STEP 3 by clicking on the "[Delete Duplicates](#)" toolbar button  . This will delete the selected ("X"-out) duplicates and send them to the folders that were selected in the "[Duplicate Folders](#)" dialog. You can change the destination folders for deleted duplicates at any time by

clicking the toolbar button  .

## Contact Us

If you have any questions about the SewClean program, or any suggestions for improvements or additional features you would like to see added, please contact us at

[support@sandscomputing.com](mailto:support@sandscomputing.com)





## Menus

### File Menu

#### File menu commands

The File menu offers the following commands:

<a href="#">Find Duplicates</a>	Begin search through selected folders for duplicates.
<a href="#">Delete Duplicates</a>	Delete selected duplicate files (move to Recycle Bin or user folder).
Exit	Quit the application

### Options menu

#### Options menu commands

The Options menu offers the following commands:

<a href="#">Deletion Criteria</a>	Select criteria for deleting duplicates.
<a href="#">Duplicate Folders</a>	Select destination for duplicates (Recycle Bin or user folder).
<a href="#">Language Support</a>	Choose language for <b>SewClean</b> interface and commands.

### Help menu

#### Help menu commands

The Help menu offers the following commands:

<a href="#">Help Topics</a>	List help topics
<a href="#">Auto-Update</a>	Allow updater to search (once daily) for updates
<a href="#">Update Now</a>	Checks website for newer version of software
About SewClean	Display program information, user registration, and version number.
Change (History)	View text file containing history of program changes.
Log	

## File Commands

### Find Duplicates

Use this command to begin searching for duplicates of the files in the selected folders in the left pane.

Before clicking this toolbar button, you must select certain criteria to guide the path that will be searched for duplicates. (See "[Getting Started](#)", STEP 2, for more information.)

Duplicates will be marked for deletion and appear with a red "X" through them, based on the deletion criteria chosen in the [File Deletion Criteria dialog](#).

Shortcuts



Toolbar:

### Delete Duplicates

Use this command to delete the selected duplicates. The duplicates will be placed in the folders chosen in the [Duplicate Folders](#) dialog.

Shortcuts



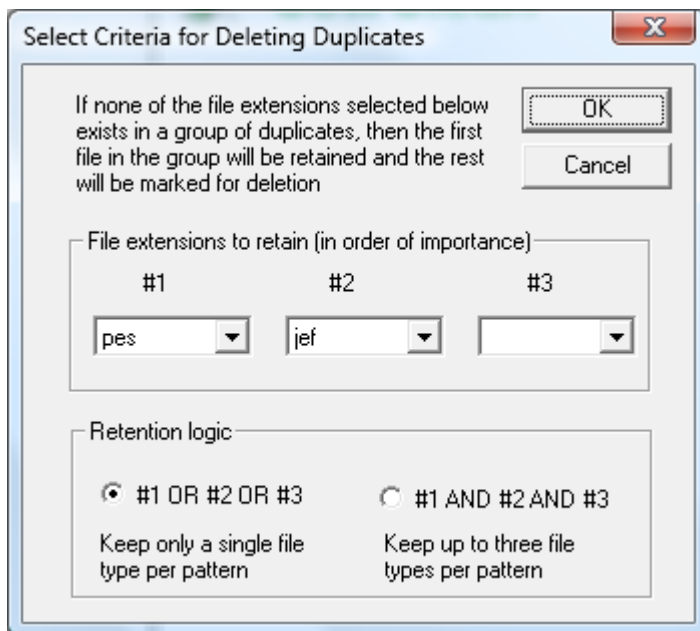
Toolbar:

## Options Commands

### Deletion Criteria

Use this command to open the dialog (below), which is used to select file extensions that will determine which duplicate types to delete and which to retain. You may choose up to three different file extensions (below we choose only two, "pes" and "jef") for the embroidery file types that should be retained (not deleted) during the duplicate scan.

The way these extensions are used to select files for deletion depends on the "retention logic" which is selected by choosing one or the other logic option below. If the "OR" logic option is chosen, then only a single file with the selected extension will be retained (that is, it is NOT marked for deletion). The order in which files are chosen for retention is determined by file extension order (1, 2, 3) chosen. If the "AND" logic option is chosen, then up to three file types will be retained for each distinct pattern. This is useful for users with multiple sewing machines that need to keep different file types for the same pattern.



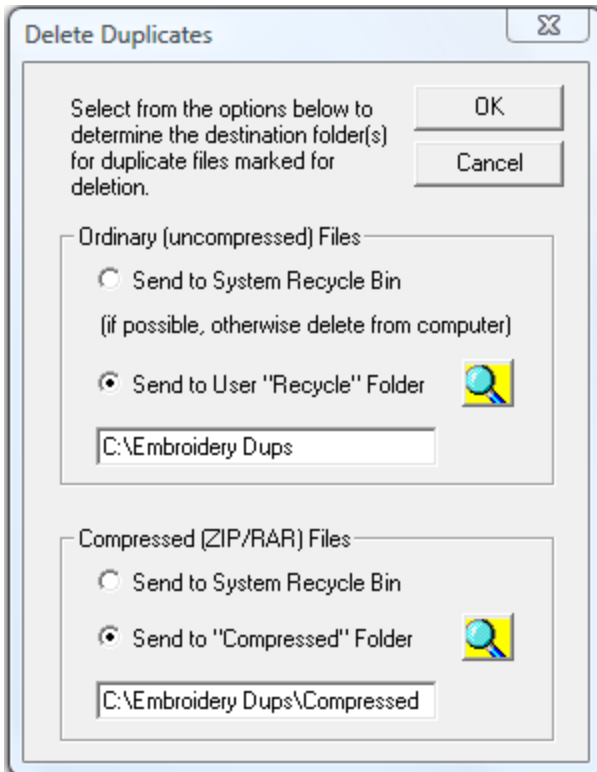
### Shortcuts

Toolbar:



### Duplicate Folders

Use this command to open the Delete Duplicates dialog (see Figure below) to set destination folders for duplicate files that will be deleted.



There are two options for both ordinary (uncompressed) files and files store in ZIP or RAR archives. Destination options include the Recycle Bin or a user-defined folder. (A separate folder option is provided for compressed files.) Click the browse (magnifying glass icon) button to look for possible user folder locations, or enter the name of a new or existing folder in the edit box. Files sent to the Recycle Bin can be either restored by right-clicking on the Recycle Bin desktop icon and choosing "Open" (and then restore items from there), or permanently deleted by choosing the "Empty Recycle Bin" option.

Since there is no way to write a RAR file (outside of the proprietary **WinRar** software), **SewClean** will extract the files from the RAR file archive that are retained (*not* duplicates) and rewrite them to a "zip" file with an extension "\_rar" added to the file name.

#### NOTE OF IMPORTANCE

Care should be taken when specifying the Recycle Bin, since only files on hard drives of the current computer (not networked drives) will be placed there. Other files will be deleted and are unrecoverable. For safety, it is advisable to send duplicates to the user-defined folders and delete them from there when they are no longer needed. Also note that files marked as duplicates on CD drives will not be deleted or moved.

#### Shortcuts



Toolbar:

## Language Support

Click on this Options menu item and select the desired language for displaying the **SewClean** commands and user interface.



## Help Commands

### Help Topics

Use this command to display the opening screen ("Get Started") of Help. From the opening screen, you can jump to step-by-step instructions for using **SewClean** and various types of reference information.

Once you open Help, you can click the Contents button whenever you want to return to the opening screen.

### Auto-Update

Use this command to toggle (turn on/off) automatic updating of **SewClean** software. When this menu item is checked (unchecked), auto-updating is allowed (prevented). With auto-updating allowed, the **S & S website** will be checked whenever the application is opened (but not more than once daily) for available updates. If there is an update available, the user will be given the opportunity to install it. The installation will *automatically* close the **SewClean** workspace, remove the older version, install the update, and restart the application.

### Update Now

Use this command to search the **S & S website** *immediately* for the availability of an update for **SewClean**. If an update is found, the user is given a choice to install it.

### Change (History) Log

Use this command to display the history of changes made to **SewClean**.






## Toolbars

### Main Toolbar

SewClean Toolbar



The toolbar is displayed across the top of the application window, below the menu bar. The toolbar provides quick mouse access to tools used in **SewClean**.

Click	To
	<a href="#">Search</a> folders for duplicates of files in selected folders (checked in left pane).
	<a href="#">Delete</a> selected duplicates.
	<a href="#">Select criteria</a> to guide searching folders for duplicates.
	<a href="#">Select destination</a> (user-defined folders, Recycle Bin) for deleted duplicates.
	Get context-sensitive help for items on the toolbar.